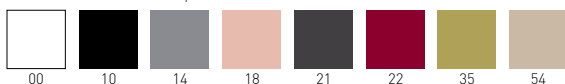


# Dame Stool



Available Shell Color / Colori disponibili Scocca

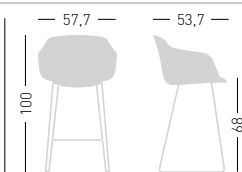


## DAME S 68



Chromed wire steel frame, technopolymer shell and upholstered cushion.

Struttura a slitta in filo cromata, scocca in tecnopolimero e cuscino tappezzato.



NA not assembled / non assemblata



0,57 m<sup>3</sup> - 34,4 kg.  
65,5x54,5x62,5cm



+ 57x63x97cm  
4 pcs [carton]

Frame Finishing & Codes / Finiture Telai e Codici

cod. 267. \_\_ - (E) / 68S chromed/cromata  
 cod. 267. \_\_ - (K) / 68S chromed/cromata  
 cod. 267. \_\_ - (SX) / 68S chromed/cromata  
 cod. 267. \_\_ - (MG) / 68S chromed/cromata  
 cod. 267. \_\_ - (B) / 68S chromed/cromata  
 cod. 267. \_\_ - (S) / 68S chromed/cromata  
 cod. 267. \_\_ - (DK) / 68S chromed/cromata  
 cod. 267. \_\_ - TC / 68S chromed/cromata

Fabric required  
 Fabbisogno di tessuto  
 4 pcs: Lin Mtrs 1,0 (h1,40)

COM fabric min. order  
 10pcs each code  
 Tessuto cliente TC ordine  
 min. 10pz per codice

Min. order 4pcs  
 each code  
 Ordine min 4pz  
 per codice

Available coverings / Finiture disponibili  
 King fabric / Tessuto King **K** (4pcs min.)  
 Blazer fabric / Tessuto Blazer **B** (4pcs min.)  
 Superb Trevira Velvet / Velluto Superb Trevira **S** (4pcs min.)  
 Kvadrat fabrics / Tessuti Kvadrat **DK** (4pcs min.)  
 Silvertex Fabric / Tessuto Silvertex **SX** (4pcs min.)  
 Aurea eco-leather / Ecopelle Aurea **E** (4pcs min.)  
 Maglia fabric / Tessuto Maglia **MG** (4pcs min.)  
 COM fabric / Tessuto Cliente **TC** (10pcs min.)

Available Frame Colors / Colori disponibili Telaio

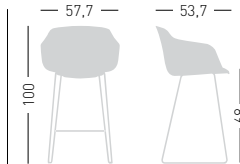


Chromed  
 Cromato

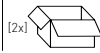
# DAME UPHOLSTERED IMBOTTITI

Available coverings / Finiture disponibili  
 King fabric / Tessuto King **K** (4pcs min.)  
 Blazer fabric / Tessuto Blazer **B** (4pcs min.)  
 Superb Trevira Velvet / Velluto Superb Trevira **S** (4pcs min.)  
 Kvadrat fabrics / Tessuti Kvadrat **DK** (4pcs min.)  
 Aurea eco-leather / Ecopelle Aurea **E** (4pcs min.)  
 Leather / Pelle **P** (4pcs min.)  
 COM fabric / Tessuto Cliente **TC** (10pcs min.)

**DRESS DAME S 68** Chromed wire steel frame, padded and upholstered shell.  
 Struttura a slitta in filo cromata, scocca imbottita e rivestita.



NA not assembled / non assemblata



0,57 m<sup>3</sup> - 36,4 kg.  
 65,5x54,5x62,5cm



+ 57x63x97cm  
 4 pcs [carton]

Frame Finishing & Codes / Finiture Telaie e Codici

**cod. 267. \_\_/IE68S** chromed/cromata  
**cod. 267. \_\_/IK68S** chromed/cromata  
**cod. 267. \_\_/IB68S** chromed/cromata  
**cod. 267. \_\_/IS68S** chromed/cromata  
**cod. 267. \_\_/IDK68S** chromed/cromata  
**cod. 267. \_\_/IP68S** chromed/cromata  
**cod. 267./ITC68S** chromed/cromata

Fabric required  
 Fabbisogno di tessuto  
 1 pc: Lin Mtrs 1,8 (h1,40)

COM fabric min. order  
 10pcs each code  
 tessuto cliente TC ordine  
 min. 10pz per codice

Min. order 4pcs  
 each code  
 Ordine min 4pz  
 per codice

Available Frame Colors / Colori disponibili Telaio



Chromed  
 Cromato